

Proposed Designation

Proposed Designation

Existing Designation

Existing Designation

Proposed Designation 500m Buffer

Proposed Designation 500m Buffer

Proposed Designation 1000m Buffer

Proposed Designation 1000m Buffer

Highly Productive Land - Transitional definition from NPS-HPL (1)

Rural Urban Boundary (RUB)

Historic Heritage Overlay Place

Notable Trees Overlay

Verified position of tree

Unverified position of tree

Outstanding\_Natural\_Landscapes\_Overlay

Notable Group of Trees Overlay

High Natural Character Overlay

Outstanding\_Natural\_Character\_Overlay

AK- Significant Ecological Areas

Terrestrial

Marine

Marine

priority\_coastal\_areas

hayward\_and\_diamond\_historic\_sites

hayward\_and\_diamond\_historic\_sites

hayward\_and\_diamond\_historic\_sites

CHL\_PLACES\_GIS\_VIEW\_Category

Archaeological Site

Hayward and Diamond

Historic Botanical Site

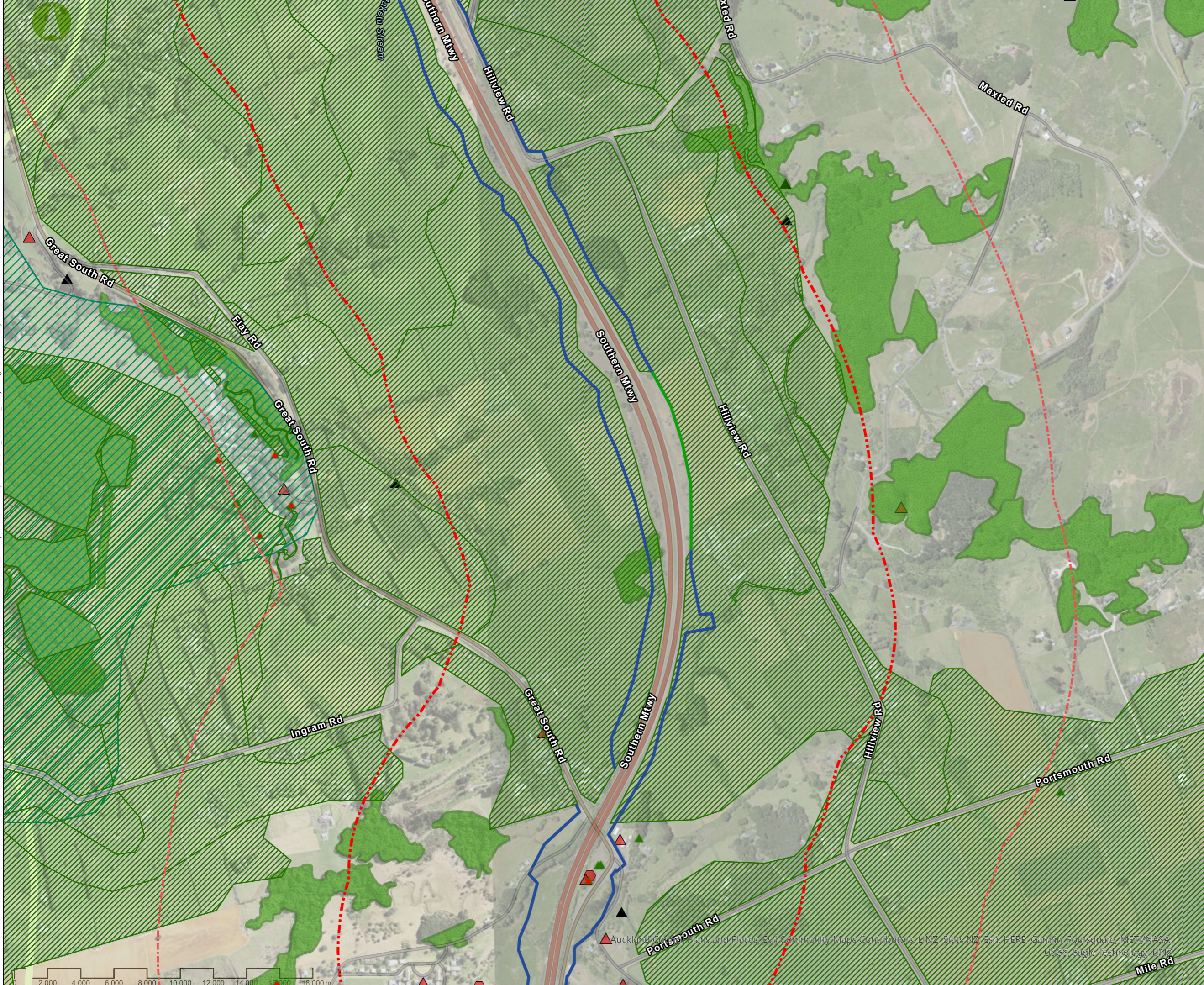
Historic Structure

Maori Heritage Area

Maritime Site

Priority Areas For Survey

Archaeological Surveyed Only



C:\Users\andreas.wilson\OneDrive - Aurecon Group\Documents\Projects\P506207\_P2D\0002\_Drury Designation Boundary

Author: Andreas Wilson

Auckland Council Plans and Places, Esri, Community Maps Contributors, LINZ, Stats NZ, Esri, HERE, Garmin, Foursquare, METI, NASA, USGS, Eagle Technology, LINZ

Proposed Designation

Proposed Designation

Existing Designation

Existing Designation

Proposed Designation 500m Buffer

Proposed Designation 500m Buffer

Proposed Designation 1000m Buffer

Proposed Designation 1000m Buffer

Highly Productive Land - Transitional definition from NPS-HPL (1)

Rural Urban Boundary (RUB)

Historic Heritage Overlay Place

Notable Trees Overlay

Verified position of tree

Unverified position of tree

Outstanding\_Natural\_Landscapes\_Overlay

Notable Group of Trees Overlay

High Natural Character Overlay

Outstanding\_Natural\_Character\_Overlay

AK- Significant Ecological Areas

Terrestrial

Marine

Marine

priority\_coastal\_areas

hayward\_and\_diamond\_historic\_sites

hayward\_and\_diamond\_historic\_sites

CHL\_PLACES\_GIS\_VIEW\_Category

Archaeological Site

Hayward and Diamond

Historic Botanical Site

Historic Structure

Maori Heritage Area

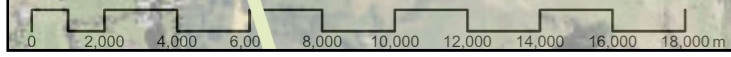
Maritime Site

Priority Areas For Survey

Archaeological Surveyed Only



Auckland Council Plans and Places, Esri, Community Maps Contributors, LINZ, Stats NZ, Esri, HERE, Garmin, Foursquare, METI, NASA, USGS, Eagle Technology, LINZ



C:\Users\andreas.wilson\OneDrive - Aurecon Group\Documents\Projects\P506207\_P2D\0002\_Drury Designation Boundary  
Author: Andreas Wilson

Proposed Designation

Proposed Designation

Existing Designation

Existing Designation

Proposed Designation 500m Buffer

Proposed Designation 500m Buffer

Proposed Designation 1000m Buffer

Proposed Designation 1000m Buffer

Highly Productive Land - Transitional definition from NPS-HPL (1)

Rural Urban Boundary (RUB)

Historic Heritage Overlay Place

Notable Trees Overlay

Verified position of tree

Unverified position of tree

Outstanding Natural Landscapes Overlay

Notable Group of Trees Overlay

High Natural Character Overlay

Outstanding Natural Character Overlay

AK- Significant Ecological Areas

Terrestrial

Marine

Marine

priority\_coastal\_areas

hayward\_and\_diamond\_historic\_sites

Archaeological Site

Hayward and Diamond

Historic Botanical Site

Historic Structure

Maori Heritage Area

Maritime Site

Priority Areas For Survey

Archaeological Surveyed Only

CHL\_PLACES\_GIS\_VIEW\_Category

Archaeological Site

Hayward and Diamond

Historic Botanical Site

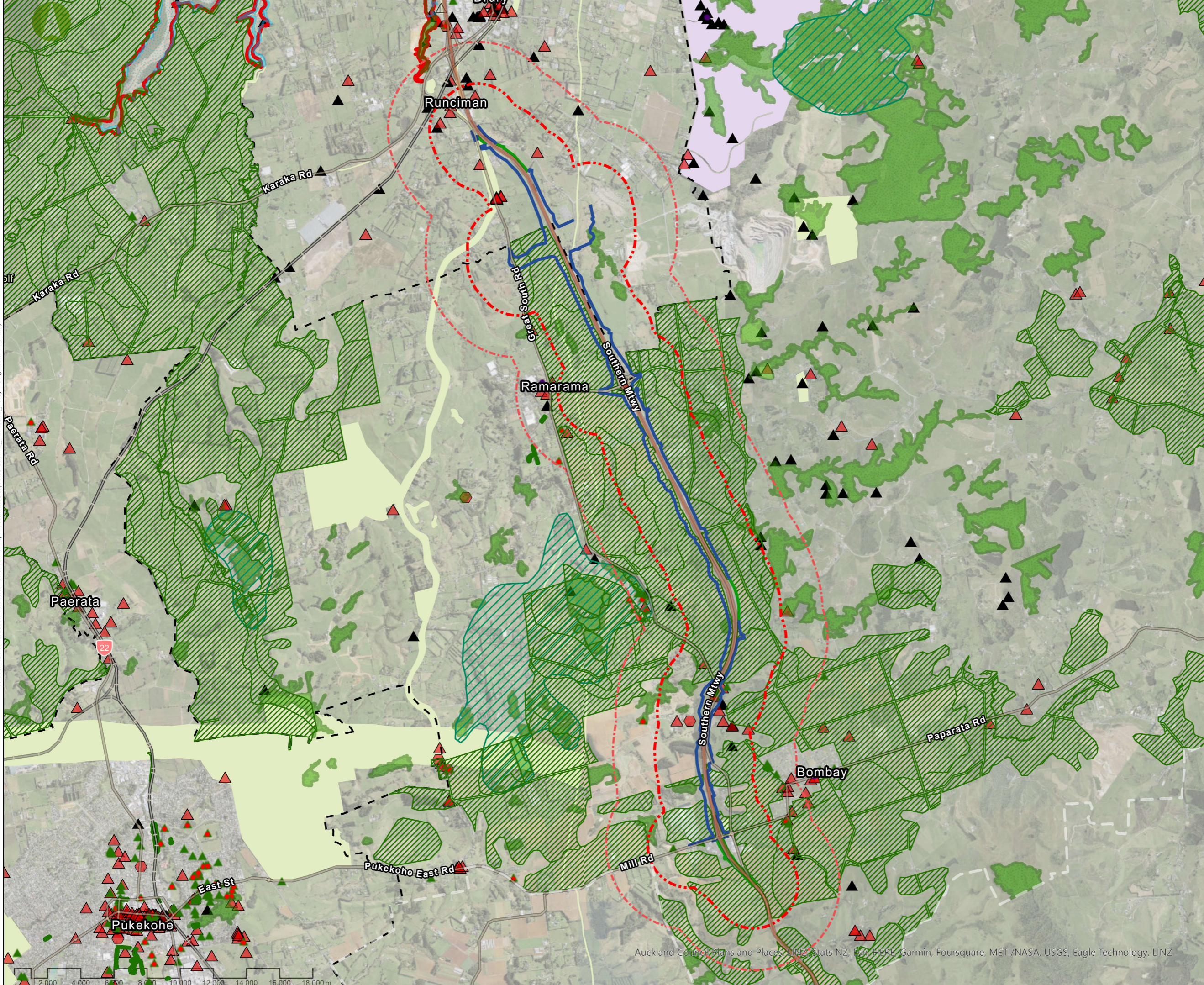
Historic Structure

Maori Heritage Area

Maritime Site

Priority Areas For Survey

Archaeological Surveyed Only



Auckland Council Plans and Places, LINZ, Stats NZ, Esri, HERE, Garmin, Foursquare, METI/NASA, USGS, Eagle Technology, LINZ

C:\Users\andreas.wilson\OneDrive - Aurecon Group\Documents\Projects\P506207\_P2D\0002\_Drury Designation Boundary  
Author: Andreas Wilson